

SCHEDULE			
PART	LOT	PLAN	PIN
1			
2	PART OF PARK LOT 1 BLOCK D	6262	ALL OF 05089-0001
3			
4	HENDERSON SECTION		
5			
6			

PLAN OF SURVEY OF

**PART OF PARK LOT 1
BLOCK D
HENDERSON SECTION
REGISTERED PLAN 6262
FORMERLY TOWN OF ALMONTE
MUNICIPALITY OF MISSISSIPPI MILLS
COUNTY OF LANARK**

Surveyed by Annis, O'Sullivan, Vollebek Ltd.

Scale 1 : 150



The intended plot size of the plan is 914 mm in width by 457mm in height when plotted at a scale of 1:150.

Metric

DISTANCES AND COORDINATES SHOWN ON THIS PLAN
ARE IN METRES AND CAN BE CONVERTED TO FEET BY
DIVIDING BY 0.3048.

Surveyor's Certificate

I CERTIFY THAT:
1. This survey and plan are correct and in accordance with the Surveys Act, the Surveyors Act and the Land Titles Act and the regulations made under them.
2. The survey was completed on the 6th day of February, 2026.

10-02-2026 Date
Jamie Leslie Ontario Land Surveyor

This plan of survey relates to AOLS Plan Submission Form Number V-124014

Notes & Legend

- Denotes Survey Monument Set
- Survey Monument Found
- SIB Standard Iron Bar
- SSIB Short Standard Iron Bar
- IB Iron Bar
- IBR Round Iron Bar
- IP Iron Pipe
- (WIT) Witness
- Meas. Measured
- (AOG) Annis, O'Sullivan, Vollebek Ltd.
- (P1) Plan 26R-2587
- (P2) Plan 26R-3110
- (P3) Plan 27R-3304
- (P4) Plan 27R-12548
- (P5) Plan 27R-12092
- C/L Centreline
- OHW Overhead Wires
- OP Utility Pole
- AN Anchor

DISTANCE NOTE

Distances shown on this plan are ground distances and can be converted to grid distances by multiplying by the combined scale factor of 0.99966.

BEARING NOTES

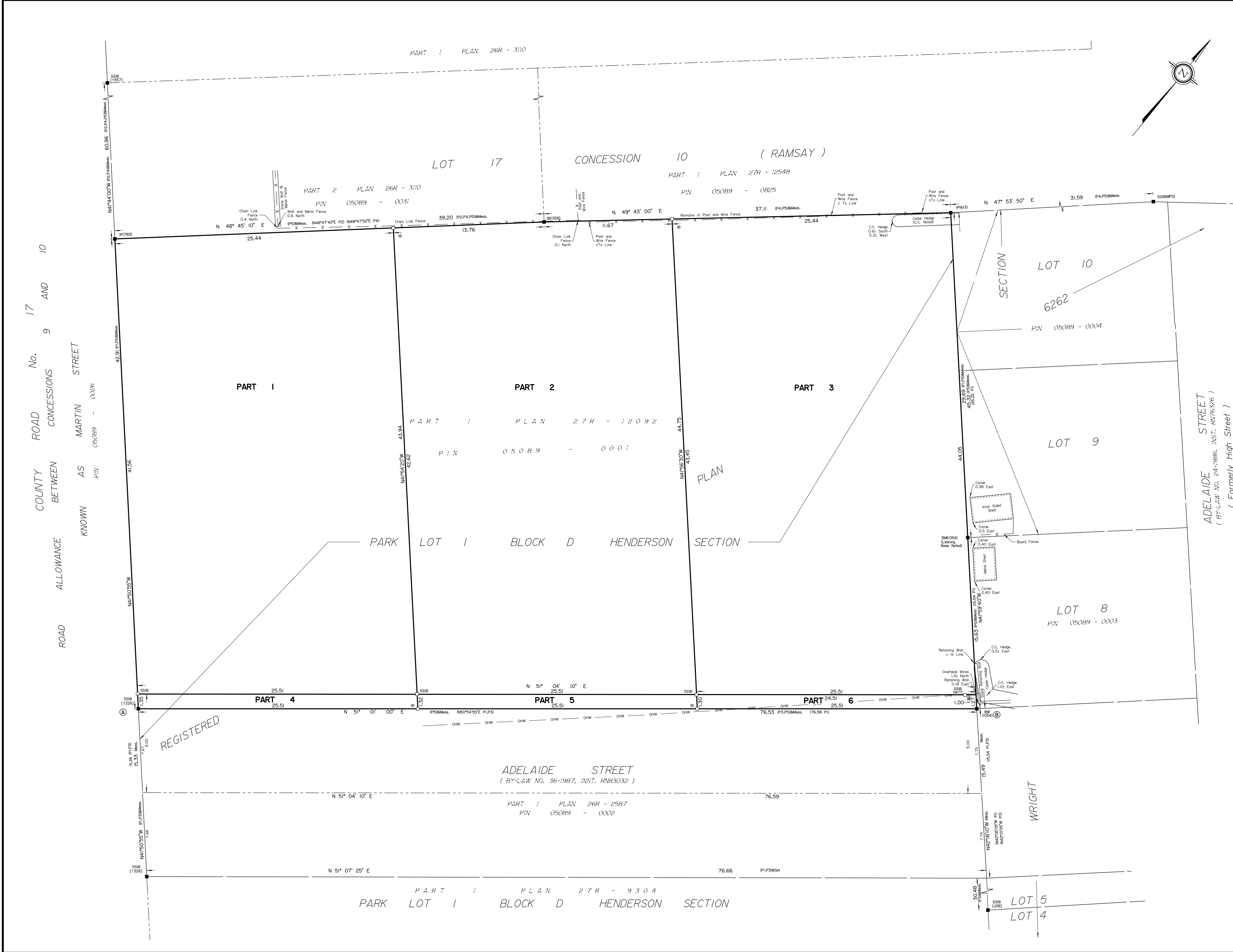
- Bearings are grid, derived from Can-Net 2016 Real Time Network GPS observations on points A and B, shown hereon, having a bearing of N51°01'00"E and are referred to the Central Meridian of UTM Zone 18 NAD-83 (CSRS) (2010).
- For bearing comparisons, a rotation of 0°43'25" clockwise was applied to bearings on plans (P1) and (P3). A rotation of 0°23'30" counter-clockwise was applied to bearings on (P2).

Coordinates are derived from Can-Net 2016 Real Time Network GPS observations and are referred to the Central Meridian of UTM Zone 18 NAD-83 (CSRS) (2010).

Coordinate values are to urban accuracy in accordance with O. Reg. 216/10.

- Point A Northing 5009571.02 Easting 405967.87
- Point B Northing 5009619.15 Easting 406027.34

Caution: Coordinates cannot, in themselves, be used to re-establish corners or boundaries shown on this plan.



COUNTY ROAD No. 17 AND 10 CONCESSIONS BETWEEN ROAD ALLOWANCE KNOWN AS MARTIN STREET PIN 05089 - 00026

REGISTERED