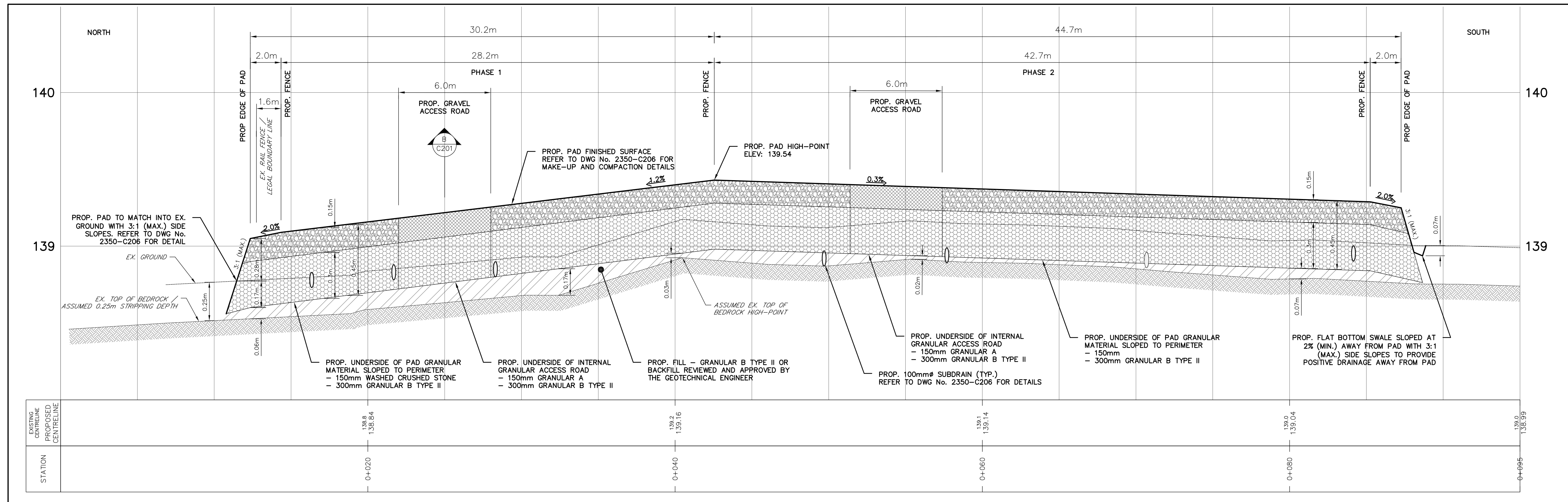


CROSS-SECTION DETAIL A: EAST-WEST
SCALE: H 1:150 V 1:15



CROSS-SECTION DETAIL B: NORTH-SOUTH
SCALE: H 1:150 V 1:15

- NOTES:
- ALL DIMENSIONS ARE IN METERS UNLESS OTHERWISE NOTED.
 - THE TOPOGRAPHICAL AND LEGAL SURVEY INFORMATION HAS BEEN TAKEN FROM THE PLAN ILLUSTRATING TOPOGRAPHICAL INFORMATION ON PART OF LOT 8 CONCESSION 8, GEOGRAPHIC TOWNSHIP OF RAMSAY, MUNICIPALITY OF MISSISSIPPI MILLS, COUNTY OF LANARK, PROVIDED BY GEORGE N. BRACKEN, ONTARIO LAND SURVEYOR, REFERENCE No. 24-2281.
 - ELEVATIONS SHOWN HEREON ARE GEODETIC (CGVD-1928: 1978) AND ARE DERIVED FROM THE CANNET VRS NETWORK STATION CARLETON PLACE, ELEVATION = 144.59m
 - SURVEY BENCHMARK
 - MAG NAIL IN ROOT OF 0.40m BASSWOOD TREE HAVING AN ELEVATION OF 140.03m
 - MAG NAIL IN 0.60m OAK TREE HAVING AN ELEVATION OF 139.82m
 - THE STATION INFORMATION HAS BEEN TAKEN FROM THE ALMONTE 2 (9.98 MW BESS) SUBSTATION / BESS LAYOUT PLAN, PREPARED BY CHIMAX INC., DRAWING No. 2428-E101.

IFC

REV.	ISSUED FOR CONSTRUCTION	19/07/2024	PC/EL CAD	JP	JP
	REMARKS	DATE	DRAWN	CHECKED	APPROVED

ISSUED FOR CONSTRUCTION



Black & McDonald

BLACK & McDONALD LTD.
31 FULLMAN CRT.
SCARBOROUGH, ONT.
M1X 1E4
TEL: (416) 291-8200
FAX: (416) 291-2092

THIS DRAWING IS THE INTELLECTUAL PROPERTY OF BLACK AND McDONALD LIMITED AND IS NOT TO BE LOANED OR REPRODUCED IN ANY WAY WITHOUT THE WRITTEN CONSENT OF BLACK AND McDONALD LIMITED

COMPASS ENERGY ALMONTE BESS

ALMONTE 2 (9.98 MW BESS)
GRADING CROSS SECTION PLAN

CLIENT DRAWING NUMBER

DRAWING NUMBER 2428-C202 REVISION 0 SHEET 1

DATE 05/07/2024 DRAWN: PC/EL CAD CHECKED: JP APPROVED: JP SCALE: AS SHOWN

PARKER CONSULTING ENGINEERS LTD.



ENG. SEAL