

The Corporation of the Municipality of Mississippi Mills

Parks & Recreation Advisory Committee

AGENDA

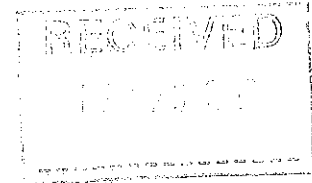
**Tuesday, April 23, 2019
3:00pm**

Municipal Office – Council Chambers

- A. APPROVAL OF AGENDA**
- B. DISCLOSURE OF PECUNIARY INTEREST**
- C. DELEGATIONS/PRESENTATIONS**
- D. APPROVAL OF MINUTES**
- E. BUSINESS ARISING OUT OF MINUTES**
- F. ROUND TABLE**
- G. REPORTS**
- H. INFORMATION/CORRESPONDENCE**
 - Pakenham Bridge Park – Pakenham Horticultural Society
- I. OTHER NEW BUSINESS**
 - Selection of Chairperson
 - Parks and Facilities overview and Tour Date
 - Capital Projects 2019
 - Volunteer Sub-Committee
- J. MEETING ANNOUNCEMENTS**
 - Proposed future meeting dates:
Tuesday May 28, Tuesday June 25, Wednesday August 14,
Tuesday September 24, Tuesday October 29, Tuesday November 26
- K. ADJOURNMENT**

Pakenham Bridge Park

Proposal for Renewal



The **Pakenham Horticultural Society** has a membership of approximately 55 local residents. Every year about 20 members are actively involved in maintaining the many public gardens in Pakenham including the Cenotaph, the Pakenham Public School (3 gardens), the Bridge area's 3 gardens (including the new Hat garden) and the Arena entrance garden. In addition, we have been planting trees in Fred Miller Park over the past 5 years. We organize the street décor annually by ordering and placing 18 planters during the summer months. In the winter, we decorate the

Christmas Tree, planted several years ago by the Hort. Society, at the Bridge and organize a lighting ceremony in conjunction with the Pakenham Country Christmas event. Many of these activities are supported by Mississippi Mills staff and funds from the town and we are relying on this very strong partnership with the Town staff to continue.

Each year we tackle a big renewal project and this year it will be the **Bridge Garden**. The iconic Pakenham 5 Span Bridge is a familiar tourism asset in Mississippi Mills. Many community and social activities are evident in the parks surrounding the Bridge especially during the good weather - fishing, 'puddling', boating, canoeing and kayaking, picnics and enjoying the scenery. In addition, it has become a destination for wedding photos and artists. All community businesses continue to reap the benefits of its capacity to draw people of all ages and from across the region to the Bridge, one of the *Seven Wonders of Lanark County*.

However, without a plan to ensure it is properly maintained, this asset will deteriorate. Our volunteer crew is very meagre and needs help with the larger tasks evident at the park. Some of these present safety hazards and could be a liability to the Town e.g. broken glass on the pathways, Wild Parsnip and Poison Ivy near the Portage trails and access issues due to overgrown shrubs and trees.

Invasive tree species are taking over e.g. Buckthorn and Manitoba Maple and we are unable to adequately remove these; in addition, there are many trees that are dead and need to be removed.

The Portage routes are overgrown and signage needs to be improved so that the route is identifiable. Also, there are several historic plaques that appear to be in need of repair or repositioning.

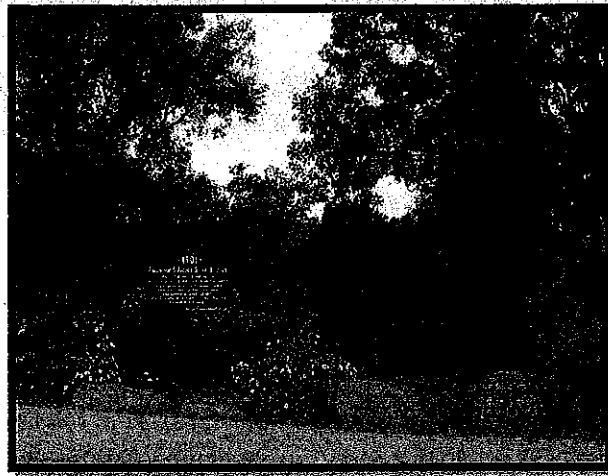
We would like to propose a project this year in partnership with the Pakenham Branch of the Royal Bank of Canada (RBC), the Pakenham Horticultural Society and the Mississippi Mills Public Works staff,

summer students and volunteers to develop a plan and begin to address these issues in a coordinated fashion.

We are asking Town staff to continue to cut and whipper-snip all of the park to ensure it is tidy looking, deal with hazardous weeds and remove the trees identified. Some iron stakes need to be removed as well.

The Pakenham Horticultural Society will continue to maintain the three gardens at the Bridge and prune the decorative shrubs and trees. We will also be adding mulch and soil enhancements.

We plan to have a **blitz day May 1 from 1pm - dusk** and would welcome assistance from Town staff, RBC team members and any other volunteers interested in ensuring our beautiful Bridge Park remains a desirable destination.



Prepared by the Pakenham Horticultural Society, Beautification Committee - March 2019

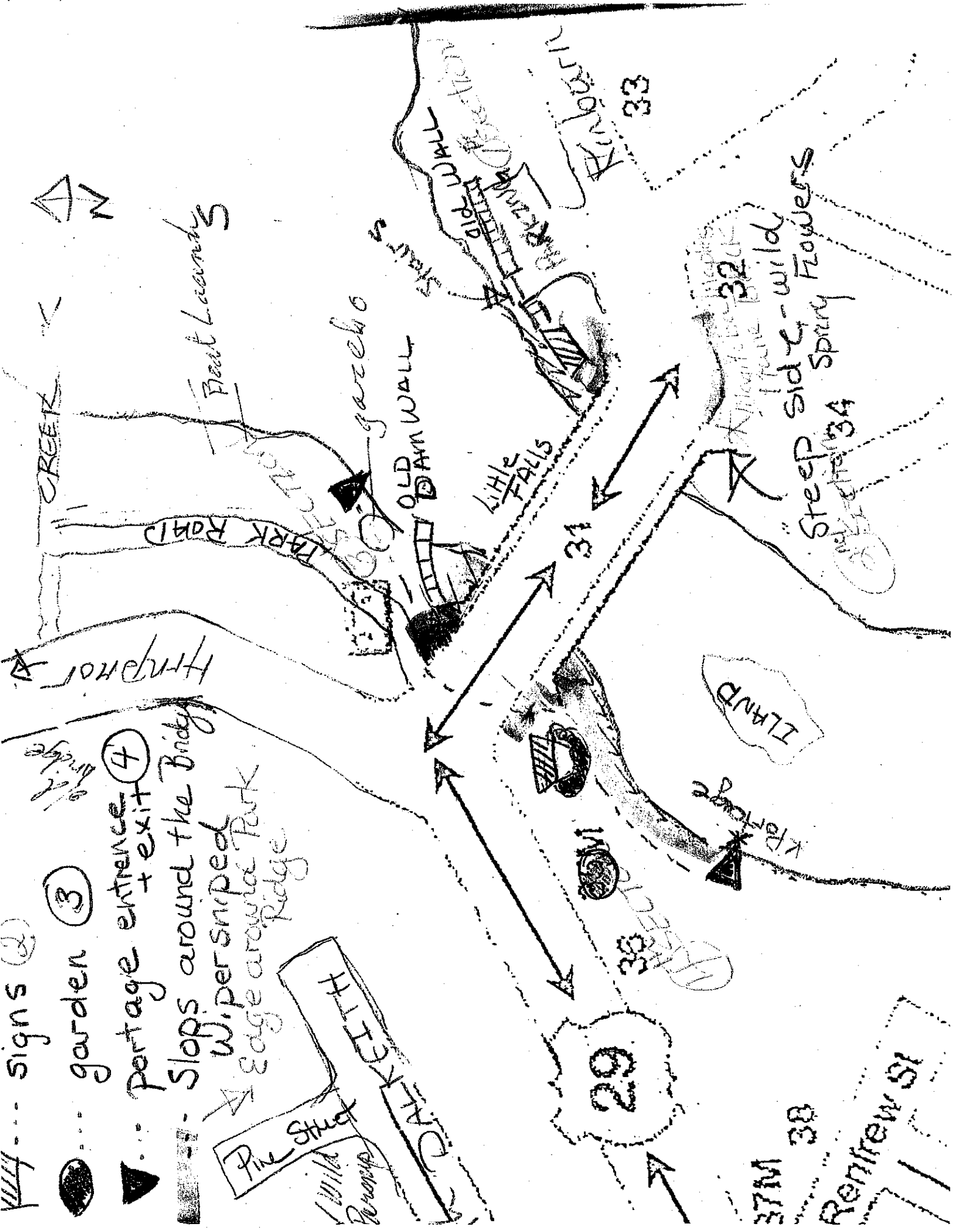
44 signs (2)

garden 3

portage entrance + exit 4

Stops around the Bridge
Wipersniped
Edge around Park Ridge

Pine Street
Wild Group



37M 38

Renfrew St

RECREATION COMMITTEE- PARK LIST (2019)

ALMONTE

Riverwalk
Kirkland Park & Gazebo
Don Maynard Park
Geo Heritage Park
Meadow Glen Park
Augusta St. Park
Wylie St. Park (New England Park)
Coleman Island Park
(Rosmond Park)
Gemmill Park- trails
Gemmill Park-
Splashpad/skatepark
Gemmill Park –
ball diamonds/soccer fields/track
Almonte Civitan Club Soccer Fields
MacGregor Sports fields
James St. Park
McIntosh Park
Snedden Casey Ball Diamond
Almonte Community Centre
NLAS- Beach/ grass cutting
grounds
Almonte Lawn Bowling

Almonte Tennis Courts

Train Wreck Memorial
Greystone Trail
Riverfront Estates Park (Central &
Waterfront)
Mill Run Park

APPLETON

Park at the Museum
Park at the dam
Park at the boat launch
Eleanor's Park (end of Duke St.)
Appleton Soccer fields

BLAKENEY

Park at the rapids

CLAYTON

Clayton Taylor park including
Cenotaph
Clayton Dam

RECREATION COMMITTEE- PARK LIST (2019)

PAKENHAM

Stewart Community Centre

Fred Millar Park

Beach

Bridge Parks (south, north & east)

RURAL

Cedar Hill School House

Munro Meadows Park

Capital Budget 2019

- 1.** Riverfront Estates Park work - \$150,000
- 2.** Dasherboard Replacement (Pakenham arena) - \$910,000
- 3.** Trees work in parks - \$10,000
- 4.** Mill Run Park - \$372,000
- 5.** Gemmill Park Basketball Court- \$40,000??
- 6.** Pakenham Ball field Lighting - \$5,000
- 7.** Tables for Upper Hall ACC - \$12,000
- 8.** Almonte Curling Club Accessibility review and door work - \$10,000
- 9.** Almonte arena score clock - \$35,000
- 10.** Trail Development - \$50,000
- 11.** Lawn Mowing Equipment - \$35,000
- 12.** Picnic Tables-\$7,000
- 13.** Security Measures –Gemmill Park \$10,000
- 14.** Gemmill Park Shelter - \$20,000