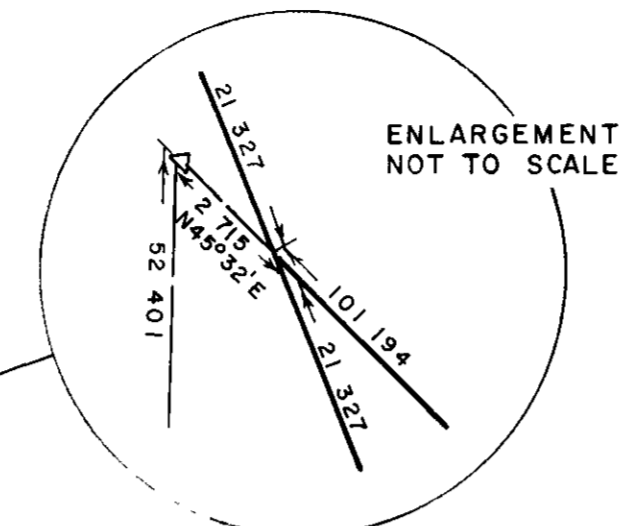
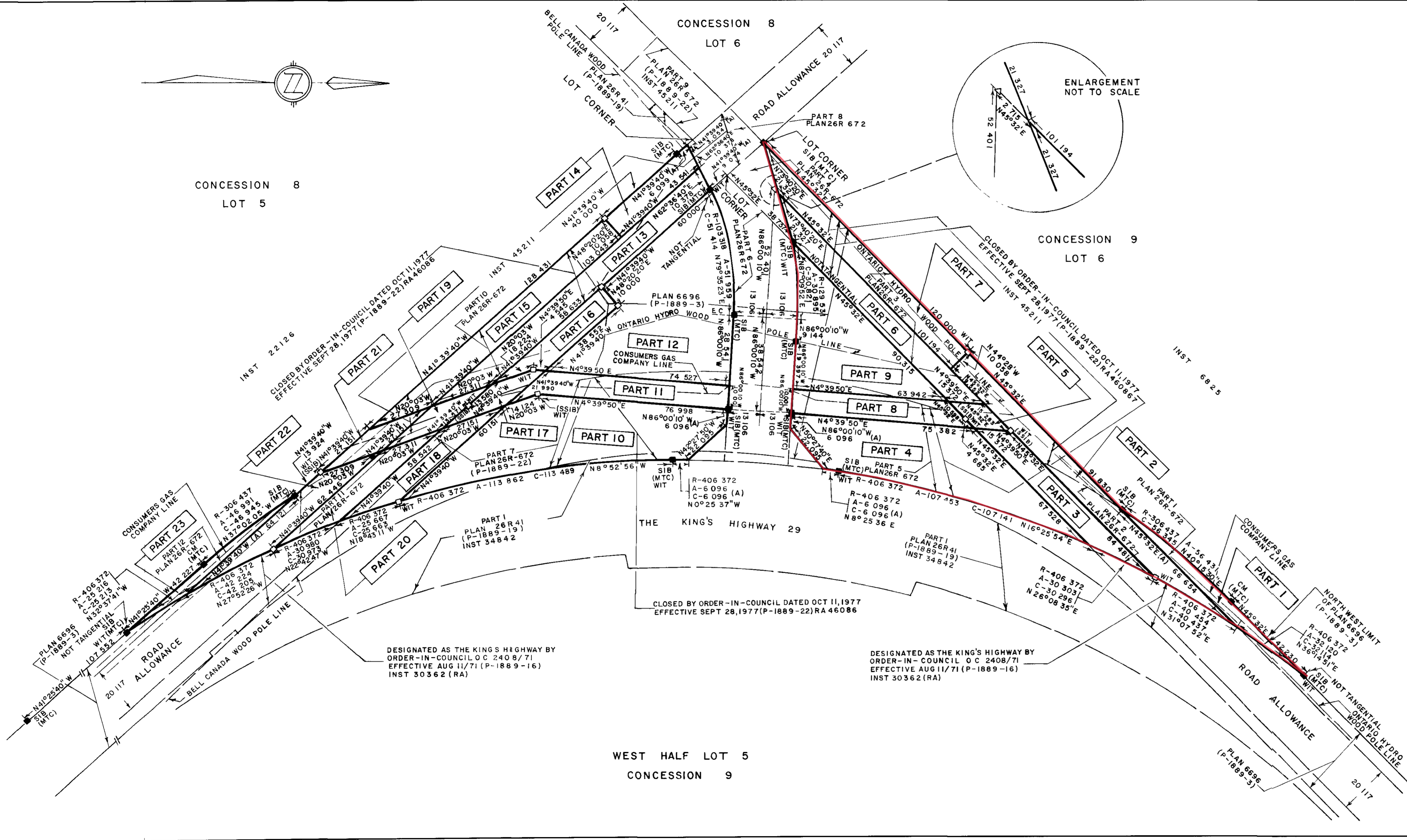


CONCESSION 8
LOT 5



SCHEDULE				
PART	AREA	INST	OWNER	LOCATION
1	323.7 m ²	PLAN 6696 (P-1889-3)	CROWN (MINISTRY OF TRANSPORTATION AND COMMUNICATIONS)	6 CONCESSION 9
23	226.6 m ²	PLAN 6696 (P-1889-3)		5 CONCESSION 8
4	2457.7 m ²	PLAN 6696 (P-1889-3) INST 34842 (P-1889-19B)		W 1/2 5 CONCESSION 9
10	2847.1 m ²	PLAN 6696 (P-1889-3)		
9	1818.1 m ²			
8	696.6 m ²			
11	814.8 m ²			
12	3315.1 m ²			
16	468.6 m ²			
17	263.0 m ²			
18	590.1 m ²			PLAN 6696 (P-1889-3) INST 45211 (P-1889-22A)
2	1383.5 m ²			
3	758.8 m ²			
5	153.7 m ²			
6	1061.5 m ²			
7	1112.4 m ²	INST 45211 (P-1889-22A)		PART OF THE ROAD ALLOWANCE BETWEEN W 1/2 LOT 5, CONCESSION 9 AND LOT 5, CONCESSION 8
13	1333.8 m ²			
14	450.8 m ²			
15	1164.1 m ²	PLAN 6696 (P-1889-3) INST 45211 (P-1889-22A)		
19	273.1 m ²			
21	273.1 m ²			
20	602.3 m ²			
22	691.1 m ²			

PLAN: 26-R-1607

I REQUIRE THIS PLAN TO BE DEPOSITED UNDER THE REGISTRY ACT

19 Oct 82

Al Bouchard
A G BOUCHARD
HEAD, SURVEYS & PLANS

RECEIVED AND DEPOSITED
OCT. 25, 1982

Joe Smithson
LAND REGISTRAR
FOR THE REGISTRY DIVISION OF LANARK NORTH (26)

APPROVED OCT 14 1982

F. Lane
O L S
ASSISTANT EXAMINER OF SURVEYS

PLAN TYPE 'U'
REFERENCE PLAN
IN THE TOWNSHIP OF
PAKENHAM
COUNTY OF LANARK

SCALE - 1:1000

10m 0 10 20 30 40 50m

SURVEYOR'S CERTIFICATE

NOTE CM DENOTES CONCRETE MONUMENT
(A) DENOTES PLAN 26R-672 (P-1889-22)

METRIC
DISTANCES SHOWN ON THIS
PLAN ARE IN METRES AND CAN
BE CONVERTED TO FEET BY
DIVIDING BY 0.3048

CAUTION: THIS PLAN IS NOT A PLAN
OF SUBDIVISION WITHIN THE MEANING
OF THE PLANNING ACT

I CERTIFY THAT

- THIS SURVEY AND PLAN ARE CORRECT AND IN ACCORDANCE WITH THE SURVEYS ACT AND THE REGISTRY ACT AND THE REGULATIONS MADE THEREUNDER
- THE SURVEY WAS COMPLETED ON THE 15th DAY OF SEPTEMBER 1982

Oct 12 1982

Ray Hunter
RAY HUNTER
ONTARIO LAND SURVEYOR

BEARINGS ARE ASTRONOMIC, DERIVED FROM THE NORTHWEST LIMIT OF THE KING'S HIGHWAY 29 SHOWN ON PLAN 6696 (P-1889-3) AND REFERRED TO THE MERIDIAN THROUGH THE INTERSECTION OF THE CENTRE LINE OF ROAD ALLOWANCE BETWEEN THE TOWNSHIPS OF RAMSAY AND PAKENHAM WITH THE CENTRE LINE OF CONSTRUCTION OF THE KING'S HIGHWAY 29 (LONGITUDE 76° 36' W)

⊕ INDICATES A STANDARD IRON BAR PLANTED, UNLESS OTHERWISE NOTED

MINISTRY OF TRANSPORTATION AND COMMUNICATIONS 1982

FOR MTC OFFICE USE ONLY

HWY	W O 79-48072	PSK-2216 & PSK-05106	PLAN
29	PLAN HAS BEEN CHECKED AND AGREES WITH INSTRUCTIONS AND APPROVALS		P-1889-25
W T NIKODIM		SUPERVISOR PLANS	
SUPERVISOR SURVEYS	PARTY CHIEF SURVEYS	EXAMINER PLANS	TECHNICIAN PLANS
RAY HUNTER, O L S	G T RYAN	P G ALLAN	R TOUSIGNANT

TECHNICIAN PLANS
R G FOSTER

EASTERN REGION

